

# HORIZON SCANNING SUITE

*Empowering analysts to tap Open Source Intelligence*



**Simulation Software & Technology Pte Ltd.**

**Office**  
583 Orchard Road  
Forum #13-02  
Singapore 238884

**Phone** +65 6100 6747  
**Fax** +65 6234 1956  
**Email** [info@simulation.com.sg](mailto:info@simulation.com.sg)  
[www.simulation.com.sg](http://www.simulation.com.sg)

# INTRODUCTION

The **S2T Horizon Scanning Suite (HSS)** is a comprehensive solution for Open Source Intelligence (OSINT). It also has applications in *Knowledge Management, Enterprise Content Management, Competitive Intelligence*, and can be customized for a variety of other applications.



OSINT represents a relatively new form of intelligence collection that involves acquiring, finding, and selecting from information from publicly available sources and analyzing it to produce actionable intelligence.

In this context, the term "*open*" refers to overt, publicly available sources, in contrast to classified or covert sources.

Information collection in OSINT poses a different challenge than collection in other intelligence disciplines where obtaining the raw information to be analyzed may be the major difficulty, especially if it is to be obtained from unwilling targets.

In OSINT, the key challenge is in identifying relevant, reliable sources from the vast amount of publicly available information, especially since the advent of the Internet.

*HSS provides a platform for the acquisition of OSINT, as well as searching, filtering, and analyzing it.*

# OUR HSS



Today's rapid-changing environment poses a significant challenge for governments, corporations and individuals.

The Horizon Scanning Suite (HSS) tackles the challenge of foreseeing potential events analyzing potential scenarios based on evidence.

HSS combines a powerful search engine and natural-language processing tools with cutting-edge visualization, analysis, modeling, monitoring and reporting tools.

**HSS maintains a content repository collected from open or other sources.** It allows analysts to formulate and express their hypotheses using modeling tools and subsequently monitor their hypotheses against evidence which accumulates in the repository. HSS provides a single tool where analysts can access and evaluate structured and unstructured data.

**HSS facilitates collaboration by multiple analysts possibly from multiple agencies.** It facilitates perspective-sharing via contextualized surveys.

# THE KEY CAPABILITIES



- Collection of Information from the Internet, Intranet, or other sources
- Powerful Search Environment
- Powerful Natural Language Processing – Entity Extraction, Theme Extraction, Sentiment Analysis
- Powerful Information Visualization
- Collaboration Features for a team of analysts – Tagging, Collaborative Annotation, Chat. The system can support up to 500 analysts working concurrently
- **Modeling Capabilities** – Users are able to create models regarding various topics using tools such as System Maps, Morphological Analysis, Bayesian Networks, System Dynamics, and Mind Mapping. Such models can be associated with data and automatically influenced by new data as it is acquired
- **Monitors and Dashboards**
- **Reporting Capabilities** – Reports in customized forms can be exported in Microsoft Word and PowerPoint formats.
- **Custom Workflows** – Users can create their own workflows

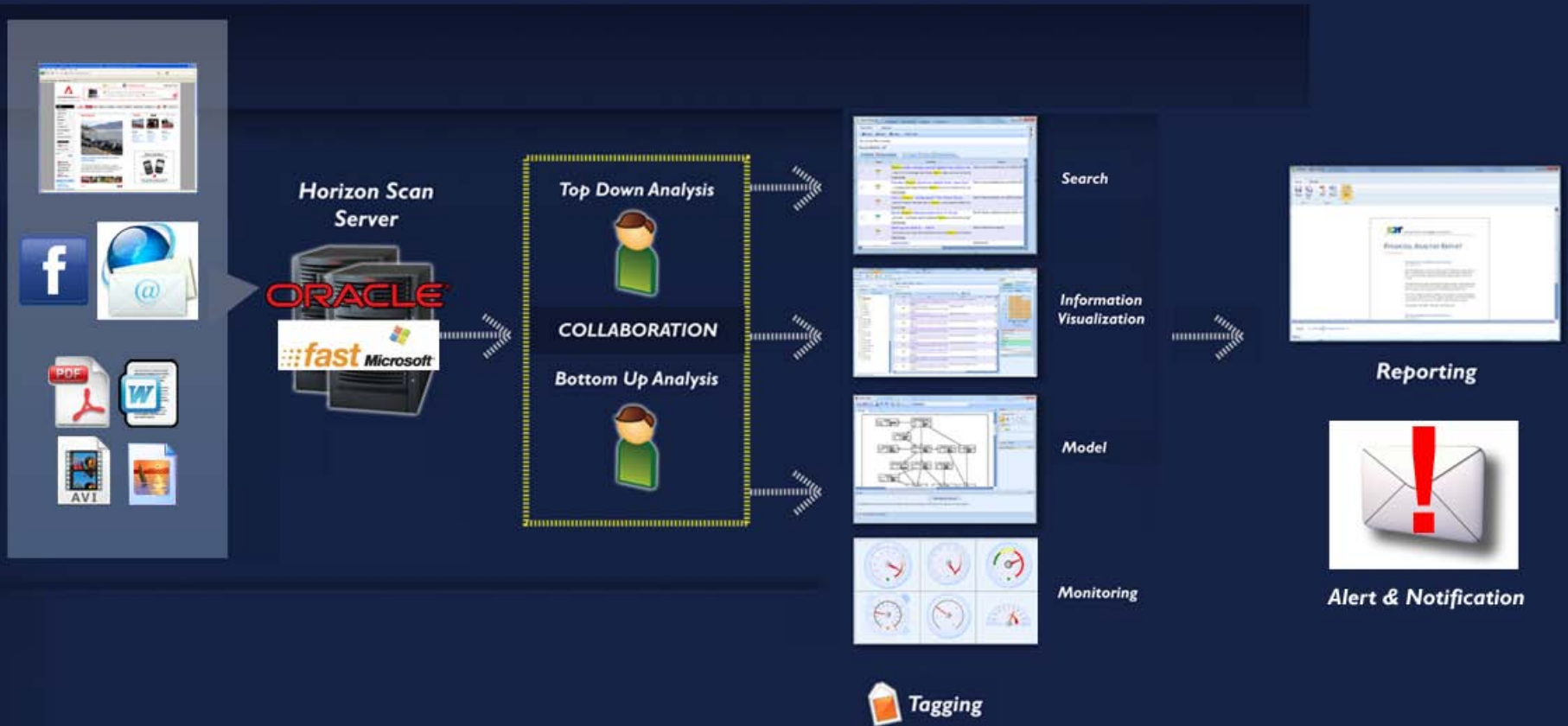


# TECHNOLOGY

- The system relies on *Microsoft Technology* to a large extent
- Database: **SQL Server**
- Thick Client User Interfaces: **WPF/Silverlight**
- Thin Client Access: **Microsoft SharePoint 2010**
- Service Layer: **WCF**
- Search Engine/Natural Language Processing: **Microsoft FAST**
- Workflow Management: **Microsoft Workflow Foundation**



# THE PROCESS



# SCREENSHOT

The screenshot displays a web-based dashboard interface with the following components:

- Navigation Bar:** Roy's Wall, Workspace, Workgroups, Messages, System Admin, Select Widgets, Search, and Advanced Search.
- Secondary Navigation:** Scan, Organise, Survey, Model, and Monitor.
- Repository Panel (Left):** Search bar, Folders (Sort By), and a tree view showing Root, United States, London, and Iraq.
- Information Visualization Panel (Center):** A grid of four charts:
  - Top Left:** A combined bar and line chart showing projected revenue and other metrics from Jan to Dec. Legend includes: Projected Revenue, Space BIZ, The Exchange, Air Mail, The Dark Warrior, Snow Baller, and Rise of the Yell.
  - Top Right:** A stacked area chart showing cumulative values from Jan to Dec. Legend includes: Power, Online, Sharepoint, and T.V.
  - Bottom Left:** A pie chart showing geographical distribution. Legend includes: North America (50%), UK (14%), Europe (17%), Asia (14%), and South America (7%).
  - Bottom Right:** A bar chart showing values from Jan to Dec.
- Control Panel (Right):** Analysis1, Add More Analysis, Data (Presidential Election Data), Fields (Candidates\_Democrat, Candidates\_Other, Candidates\_Republican, State, Year, EV Democrat, EV Republican, EV Total), Filters (Votes Total: 95219, 1321382; State: Washington; Candidates\_Democrat: (All)).